

B R O O M F I E L D

500

Heavy-Duty Coil Winding Machine

SPECIFICATIONS

The **Broomfield 500** is a three speed coil winding machine that is often used for winding larger diameter coils at lower speeds. In its headstock only configuration, the 500A is a very rugged and economical choice for hand winding.

Features & Benefits:

- Three models available:
 - 500A:** Winding headstock.
 - 500B:** Winding headstock with tailstock mounted on precision ways.
 - 500C:** Winding headstock, tailstock on precision ways, and automatic wire traversing mechanism.
- Three speed ranges with variable speed within each range. Maximum speed 85 rpm.
- Heavy-duty welded steel construction.
- Electrically actuated brake for positive stopping.
- Electronic wire guide traverse: Two precision layering styles are provided; Parallel and Spiral (500C).
- Setup time is minimized by the use of electronic controls for precisely setting wire pitch and stopping at the desired turns count (500C). The operator only needs to enter this data and set the winding width stops.
- Reverse bend system eliminates the need for pounding wire or pressing coils into shape, produces tighter coils and uses less wire (500C).
- Easily adaptable for winding single or multiple coils.



B R O O M F I E L D

500

Heavy-Duty Coil Winding Machine

Motor Equipment: 2 HP (1.5Kw) AC vector motor and drive with foot controlled variable speed.

Faceplate: 14" (356mm) diameter.

Primary Reduction: Belt and pulley.

Secondary Reduction: Gear reducer.

Spindle Speeds and Corresponding Torques

0-14 rpm	750 ft.-lbs.	(1017Nm)
0-50 rpm	210 ft.-lbs.	(285Nm)
0-85 rpm	121 ft.-lbs.	(164Nm)

Power Requirement: Electrical: 220 V, three phase, 20amps.
Other voltages available.

Spindle Rotation: Either direction can be selected by a switch on the control panel.

Spindle Center Height: 43" (1092mm) from the floor.

Brake: Electromagnetic spring set disc brake operated by removing foot from variable speed control, by total turns counter or by emergency stop button.

Tailstock: Mounted on precision ways to allow positioning anywhere along winding axis. 4" (102mm) quill travel. 60° live center in No. 4 Morse Taper.

Maximum Distance Between Centers: 500B & 500C: 42" (1066mm)

P.O. BOX 157
113 STILL RIVER ROAD
BOLTON, MA 01740-0157 USA
P: 1-978-779-6600
F: 1-978-779-2954
E: info@broomfieldusa.com

WWW.BROOMFIELDUSA.COM

Maximum Swing Diameter: 500A: 83" (2107mm)

500B: 63" (1600mm)

500C: 34" (863mm)

Machine Control: A & B Models: Programmable Electronic Counter.

C Model: S-50 Winding Controller with 50 programmable stops, 7 program capacity, parallel and spiral layering and end stops to define winding width.

Weight: 500A: 1500 lbs. (682Kg)

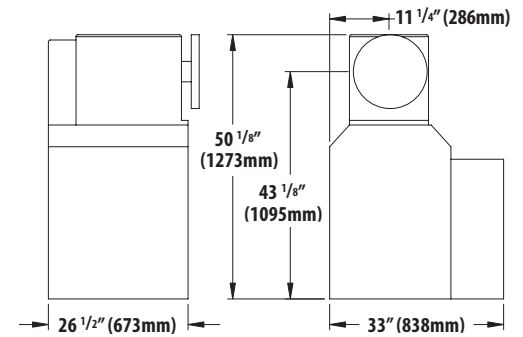
500B: 2500 lbs. (1136Kg)

500C: 3900 lbs. (1773Kg)

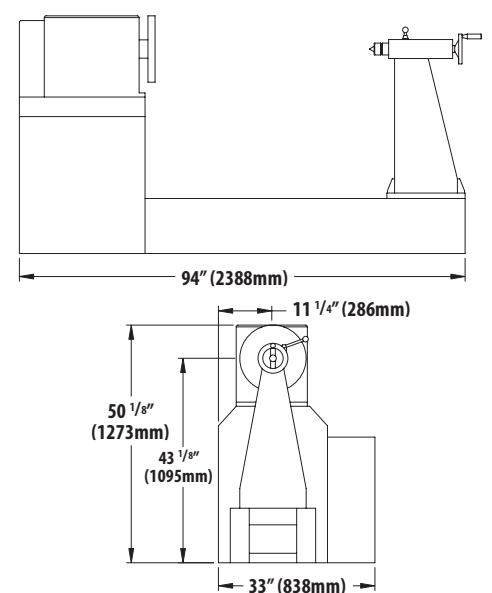
Options:

- Broomfield MP4 Controller automatically coordinates winding functions and provides for program storage.
- Multiwire guide assembly.
- Pulleys for square and rectangular wire.
- Automatic Run.
- Longer or shorter machine length.
- 3HP (2.24Kw) or 5HP (3.7kw) spindle motor.
- Heavy-duty tailstock.
- Winding area guard.
- Paper insulation dereeler/tensioners.
- Multiple coil winding.
- Custom modifications.
- Special applications.

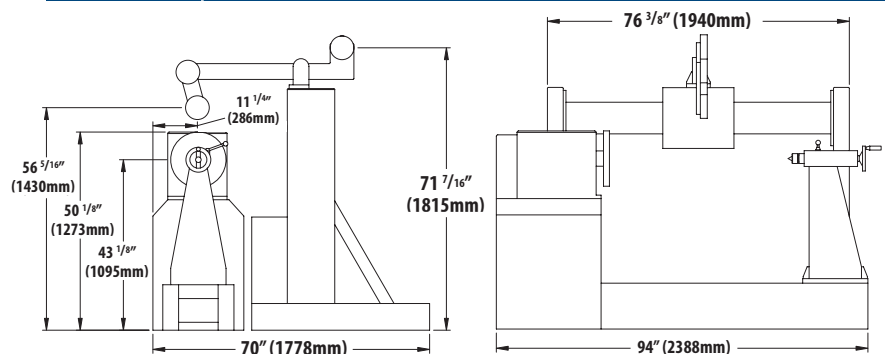
500A Model



500B Model



500C Model



BROOMFIELD